



# TRINITY VASTGROED XVII

BOEING AVENUE 1-19

BROCHURE

ADRES:  
BOEING AVENUE 1-19  
1119 PC SCHIPHOL-RIJK



# BESTAANDE SITUATIE

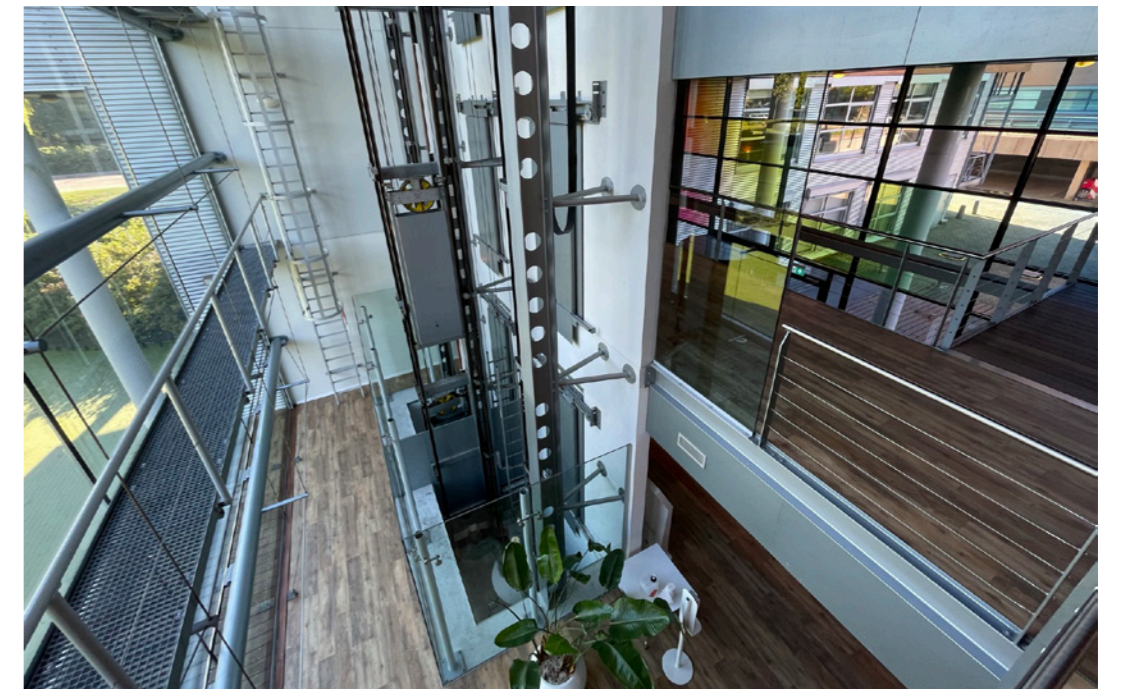
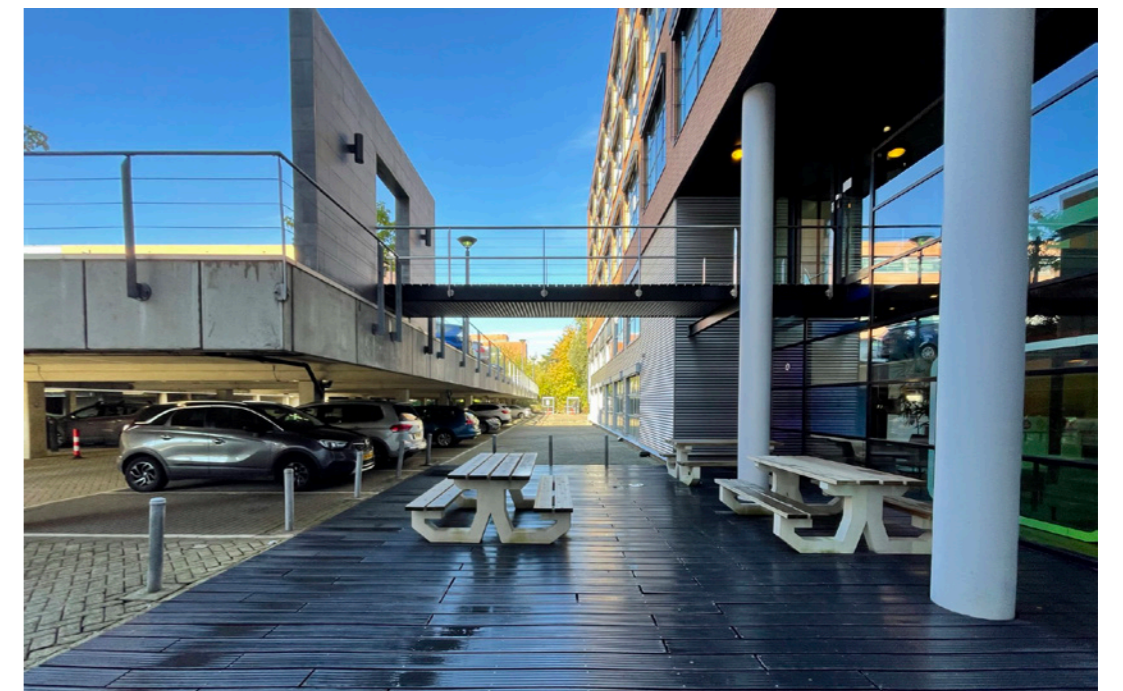
FOTO'S





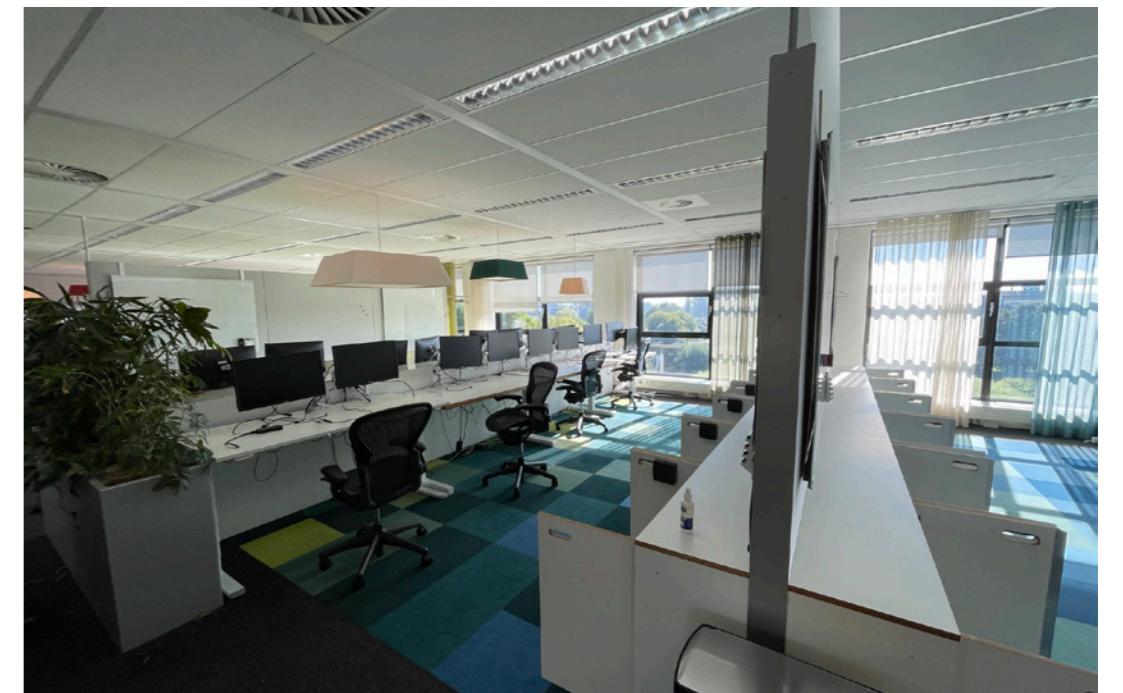
FOTO'S

# BESTAANDE SITUATIE - BUITENGEBIED & LOBBY





FOTO'S  
**BESTAANDE SITUATIE - ETAGE 2**





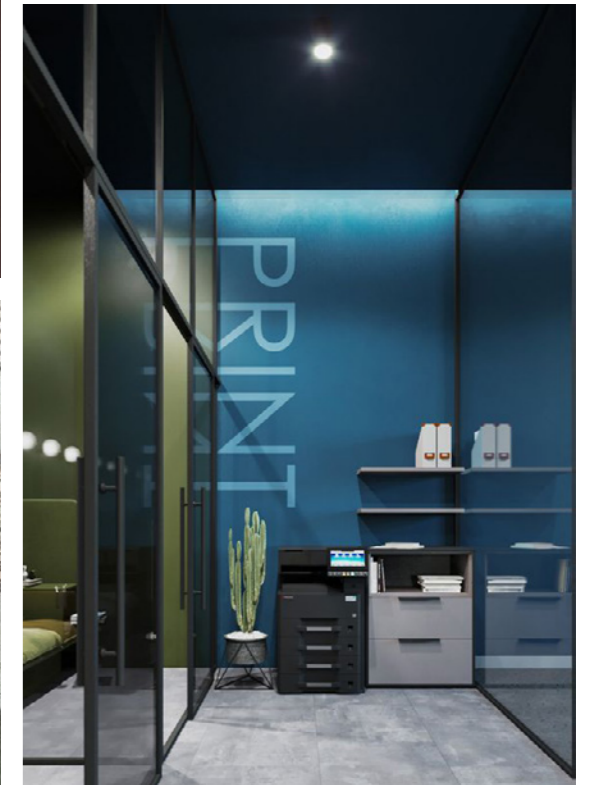
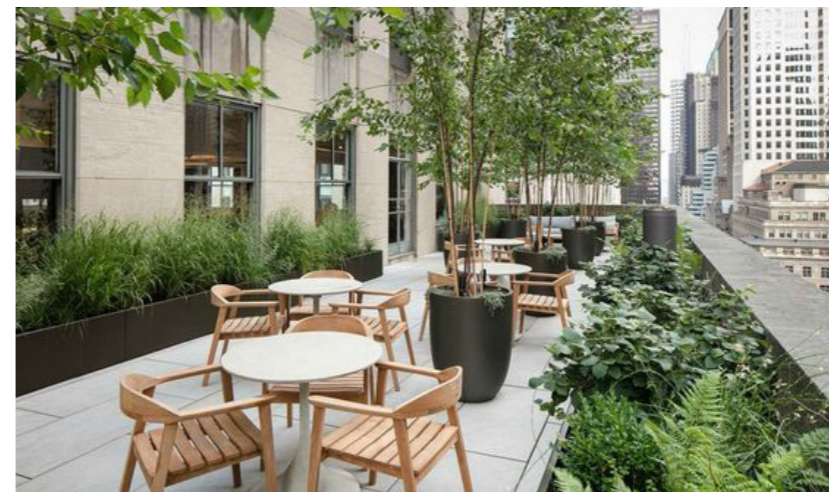
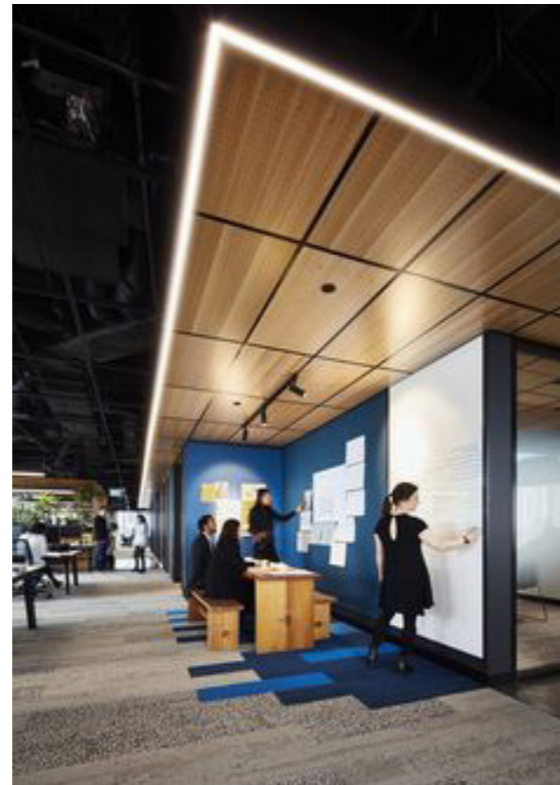
# LOOK & FEEL

ALGEHELE UITSTRALING





ALGHEHE UITSTALING  
**LOOK & FEEL**





**FLOORPLANS**

**ETAGE OVERZICHT**

SKETCH ARTIST IMPRESSIONS





ARTIST IMPRESSION  
**FLOORPLANS**



- 4<sup>TH</sup>
- 3<sup>RD</sup>
- 2<sup>ND</sup>
- 1<sup>ST</sup>
- GF

**AVAILABILITY**

4TH FLOOR	974 sqm
3RD FLOOR	877 sqm
2ND FLOOR	839 sqm
1ST FLOOR	839 sqm
GROUND FLOOR	839 sqm
<b>TOTAL BUILDING</b>	<b>4.638 sqm</b> ( + 98parking )



# BUITENGEBIED & LOBBY

## BEGANE GROND

SKETCH ARTIST IMPRESSIONS





ARTIST IMPRESSION  
BUITENGEBIED A



Trinity Vastgoed XVII

Boeing Avenue 1-19



ARTIST IMPRESSION  
**BUITENGEBIED B**





ARTIST IMPRESSION  
**BUITENGEBIED C**





ARTIST IMPRESSION  
**LOBBY A**





ARTIST IMPRESSION  
**LOBBY B**





ARTIST IMPRESSION  
**LOBBY C**





**OFFICE**

**ETAGE 2**

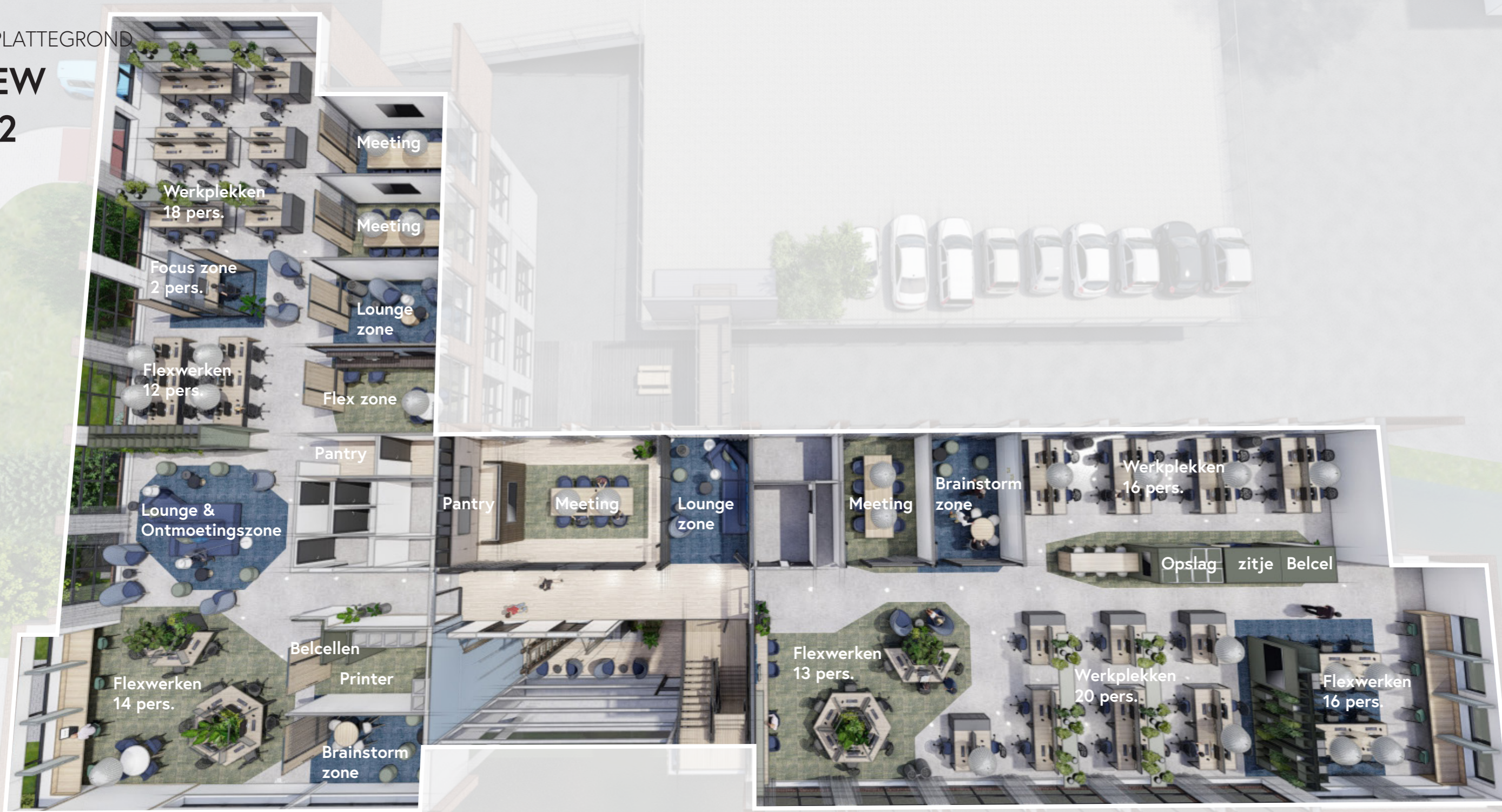
SKETCH ARTIST IMPRESSIONS





OVERZICHT PLATTEGROND

# BIRDVIEW ETAGE 2





ARTIST IMPRESSION  
**OFFICE A.**





ART IMPRESSION  
OFFICE B





ARTIST IMPRESSION  
OFFICE C





ARTIST IMPRESSION  
**OFFICE D**





ARTIST IMPRESSION  
OFFICE E





ARTIST IMPRESSION  
**OFFICE F**





ARTIST IMPRESSION  
**OFFICE G**





ARTIST IMPRESSION  
**OFFICE H**





ARTIST IMPRESSION  
**OFFICE J**





IPANY

# CONTACT GEGEVENS

DutchRE Investment Management

Email

[info@dutchre-europe.com](mailto:info@dutchre-europe.com)

Telefoon nr.

+31(0) 20 88 00 222

Website

[www.dutchre-europe.com](http://www.dutchre-europe.com)



# TRINITY VASTGOED XVII

Kantoorpand . Boeing Avenue 1-19